

COMMUNITIES CONNECT PROJECT



“Building Bridges, and Fostering the Futures of 18 - 30 year old male International Protection Applicants”



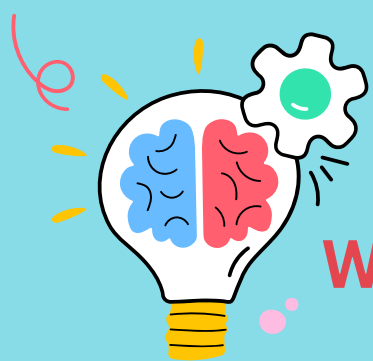
BACKGROUND

The Community Connect Project promotes the growth of inclusive communities and connects people across racial, ethnic, religious and gender lines. The project aims to address the unique challenges faced by 18 to 30-year-old male asylum seekers residing in direct provision.



BECOME A MENTOR

Can you help someone find their feet and overcome fear and isolation? Remember your life at their age and your struggle making decisions? Maybe you were the first in your family to live overseas? Can you empathise with how they are feeling?



WHAT SKILLS/EXPERIENCE DO I NEED?

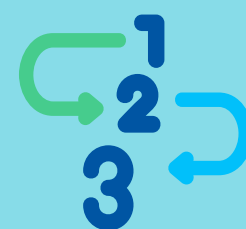
Being a good mentor is about having the right blend of soft skills and being able to apply them at the right time. In general, you will need to have the following attributes:

- Committed to your mentee and investing the necessary time to assist their development
- Having good interpersonal and listening skills
- Respecting deadlines and meetings, rescheduling as required as far in advance as possible
- Delivering constructive feedback in a positive and supportive way
- Understanding the needs and aspirations of the mentee
- Being capable of managing and driving the entire mentoring relationship using our framework



INTERESTED?

Full training and support are provided by the Communities Connect team. Complete our [application form](#) and we will be in touch with you directly, regarding the next steps.



WHERE DO I START?

Email your expression of interest to communications@cultur.ie or complete our online application form and we will get back to you.



TIME COMMITMENT

Initially, you and your mentee will focus on getting to know each other and building trust.

Every 2 weeks to build and maintain momentum.

Flexible schedule (midweek, evenings/weekends).

Duration is **9 Months**.



MENTOR FAQs

My mentee and I didn't quite hit it off, what should I do?

Be patient. Relationships tend to deepen with time and familiarity. However, if by the third session, you sense it's not improving, don't hesitate to contact us for guidance.

What if I'm not selected for a mentorship opportunity?

Don't be discouraged. The number of young people signing up is increasing. We might not be able to find the right match for your skills just now, but you could be the best match for the next young person who joins us.

How long are the mentoring sessions and how often do they take place?

The average mentoring relationship lasts for nine months. A typical meeting is 2 hours per session twice a month.

What's next after the end of the mentorship relationship?

By this time, we hope that you have made a lifelong friend and gained valuable insights from your experience. We will give you a certificate of participation for your efforts and encourage you to stay on to mentor another young person if it suits you.

Can I mentor more than one mentee?

Communities Connect mentoring is restricted to one mentee and one mentor at a time.

What happens if I need to leave the project before its conclusion?

Sometimes life happens. The project schedule is flexible and tailored around your schedule to enable you to attend to your other responsibilities while participating in the project. You will just need to advise the Project Coordinator of your situation.

